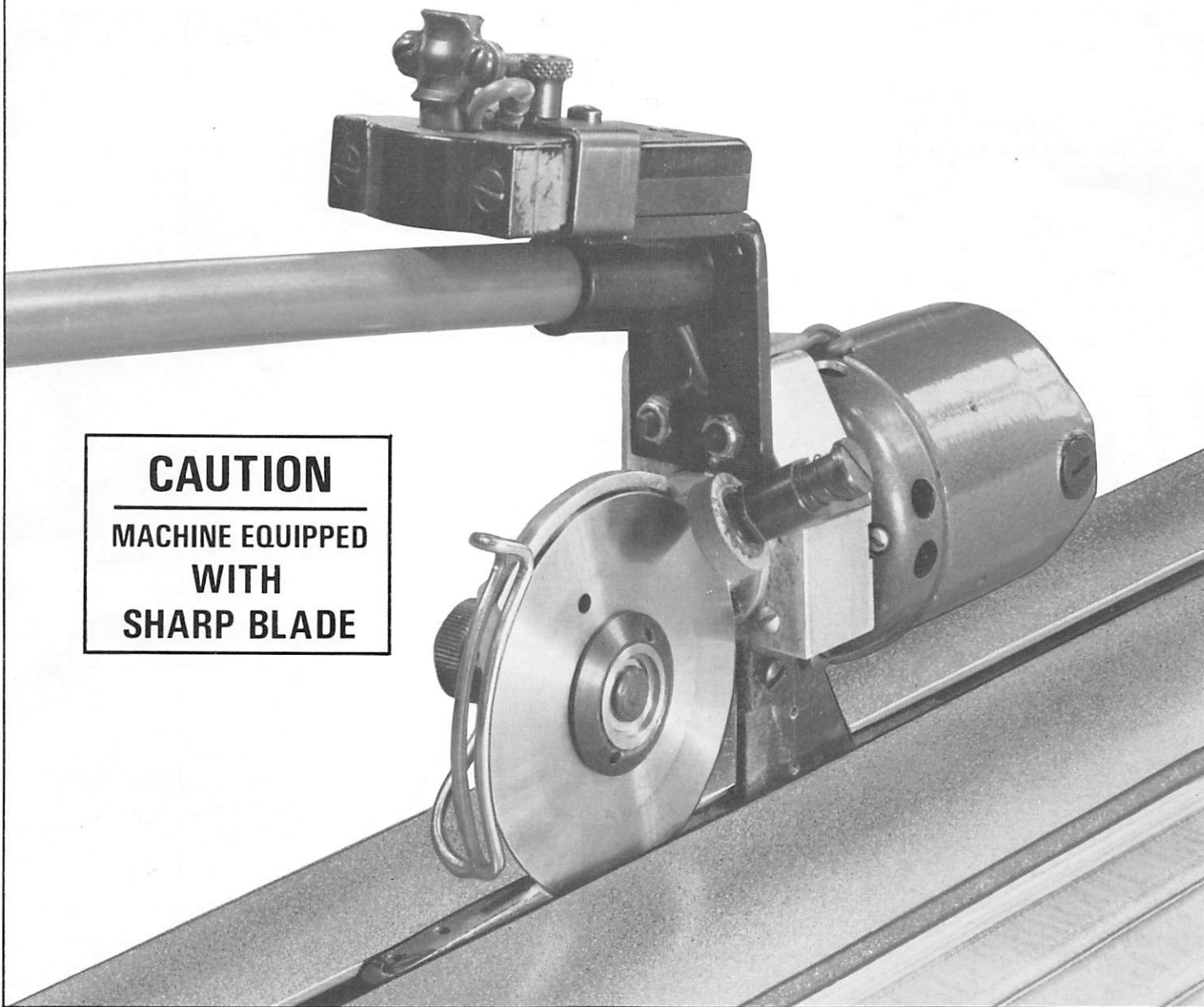


INSTRUCTION BOOK AND PARTS LIST

EASTMAN FALCON END CUTTER with LIFTING MECHANISM



CAUTION
MACHINE EQUIPPED
WITH
SHARP BLADE

Eastmanmachine
COMPANY

779 WASHINGTON STREET
BUFFALO, NEW YORK 14203
AREA CODE: 716, 856-2200

EASTMAN DEPENDABILITY. EASTMAN QUALITY AND EASTMAN SERVICE ARE YOUR GUARANTEE
THAT EASTMAN CUTTERS CUT CUTTING COSTS. THERE'S AN EASTMAN FOR EVERY CUTTING NEED

DESCRIPTION

The Falcon End Cutter rotary shear is designed for use with a lifting mechanism for cutting across the width of material while it compensates for the height of a lay. The rotary shear cutter is available with an electric or pneumatic motor. The electric motor is available in 110 or 220 volts. This machine has a motor speed of 12,000 rpm. The pneumatic motor should operate at 90 psi and has a motor speed of 20,000 rpm. A flexible handle, attached to the cutter assembly, provides for simple and easy execution of the cutting operation. Additional length handles can be made available depending on the length of the track.

MAINTENANCE

The Falcon End Cutter is designed to provide many years of trouble-free service. The following information will aid in keeping your equipment running at its top efficiency.

CAUTION: Before performing any of the following procedures, make sure the attachment plug or air line has been disengaged from the machine.

Knife Replacement – (See page 5)

To replace the knife (80C1-84HS), insert pin “A” (provided) through hole in the knife blade below clearance portion of standard. Insert spanner wrench “B” in the knife lock nut (4C1-177) and turn counter-clockwise. Once the knife lock nut has been removed, slip the knife off and replace with new knife. Be sure, when installing the new knife, that the name Eastman is shown outward. To install the knife lock nut, reverse this procedure.

Microswitch (Electric Motor) – (See page 5)

Remove two screws (300C3-3) securing the microswitch (580C1-94) to the handle adaptor and remove the two leads. This microswitch is wired in series so that it is not necessary to mark the leads that mount to this switch. Replace with new microswitch and reverse the procedure.

CAUTION: Excessive soldering heat will damage switch.

Switch in Operating Handle – (See page 5)

Remove two screws (300C7-2) securing the switch plate (52C5-176) to handle and remove switch plate with switch (580C1-48). This switch is wired in series and it is not necessary to mark the leads that mount to this switch. Replace with new switch and reverse the procedure.

MOTOR MAINTENANCE

a. Electric

The only maintenance required for the electric motor is brush replacement. With a screwdriver, remove slotted cap screws on rear of motor. Remove brush from slot. Install new brush and replace brush cap.

b. Pneumatic

For best performance, an air pressure of 90 psi is recommended. An air line oiler and filter delivering two to three drops per minute of SAE5 spindle oil is recommended.* This air line filter and lubricator is mounted in line with the air inlet hose and is not sold with the Eastman End Cutter. Check your air line for presence of any foreign particles before installing machine.

LUBRICATION – (See page 5)

Apply a few drops of 30 weight non-detergent machine oil daily to Point “A”. Remove “Tension Nut” and apply oil in end of shaft at Point “B”. Replace “Tension Nut”.

KNIFE SHARPENING

To obtain a fine, keen edge on the blade, press lightly against the sharpener button with a constant pressure.

To Replace Sharpener Stone – (See page 5)

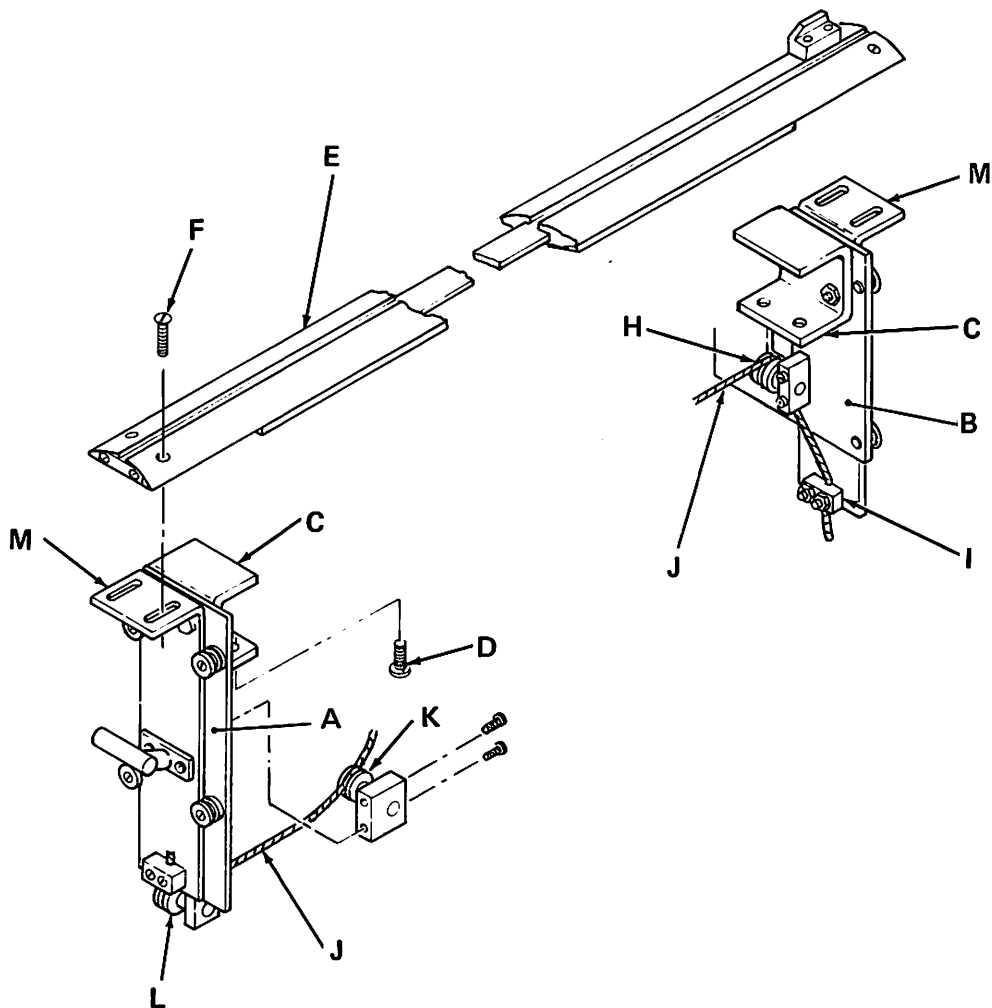
Remove screw (300C15-4) on sharpener bracket (35C5-58) and remove sharpener bracket from handle adaptor. Insert screwdriver in slotted button (20C12-160) and hold lock nut on piece (21C5-5) in place. Turn counter-clockwise. Remove and set spring (34C10-158) aside for later reassembly. Remove screw (301C10-9) by turning screw counter-clockwise and emery wheel (541C1-17) will disengage from sharpener bracket. Remove spring washer (12C15-57) and replace emery wheel. To resecure emery wheel to sharpener bracket, reverse procedure and relocate sharpener bracket on handle adaptor. Sharpener bracket has been specially designed to relocate on dowel pins so that the sharpening angle of the emery wheel remains the same.

*Not sold with machine.

LIFTING MECHANISM

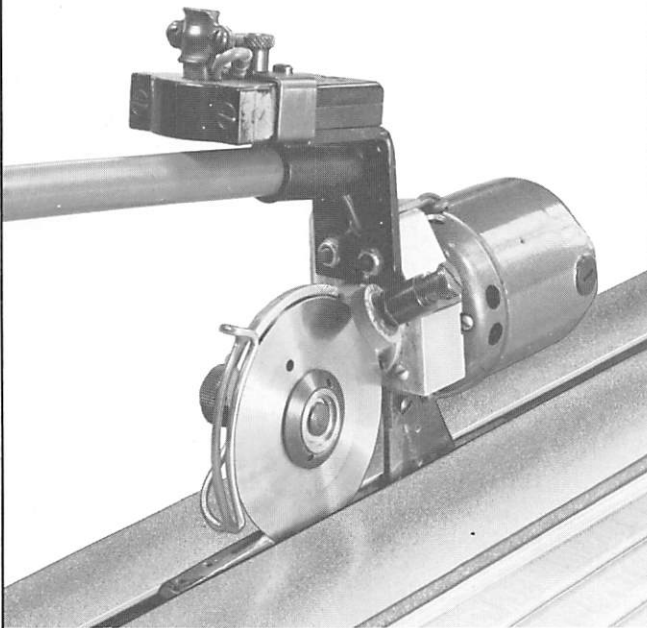
"A" and "B" are secured to the outer edge of the table by placing U channels "C" on the outer edge of each side of the table and screws "D" are screwed clockwise to secure these U frame brackets to the table. At this point, channel track "E" is placed across both lifting track plates "M" and secured with mounting screws "F". The track is then measured from the end of the table or nearest section of table to insure that the track is mounted squarely. Uprights "A" are adjusted accordingly to conform to a square

cut. End of cable "J" is secured to bracket "I". Cable "J" is fed over pullies "H" & "K" and under pulley "L" and secured to track plate "M". This cable should have a snug fit while the track is in the most downward position. To relocate this track system at another section of table, screws "D" are turned in a counterclockwise rotation to disengage U frame. End of cable "J" is released from track plate "M" and at this point, the track can be relocated. After relocation has been made, resecure screws "D" and resecure cable "J" to track plate "M".



ILLUSTRATED PARTS LIST

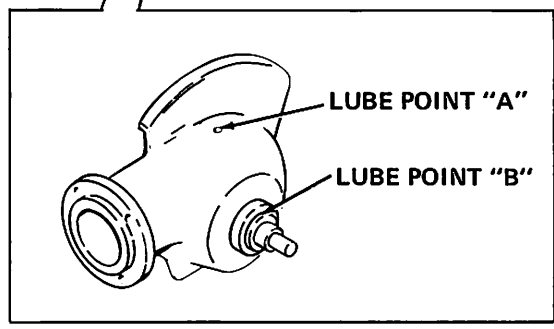
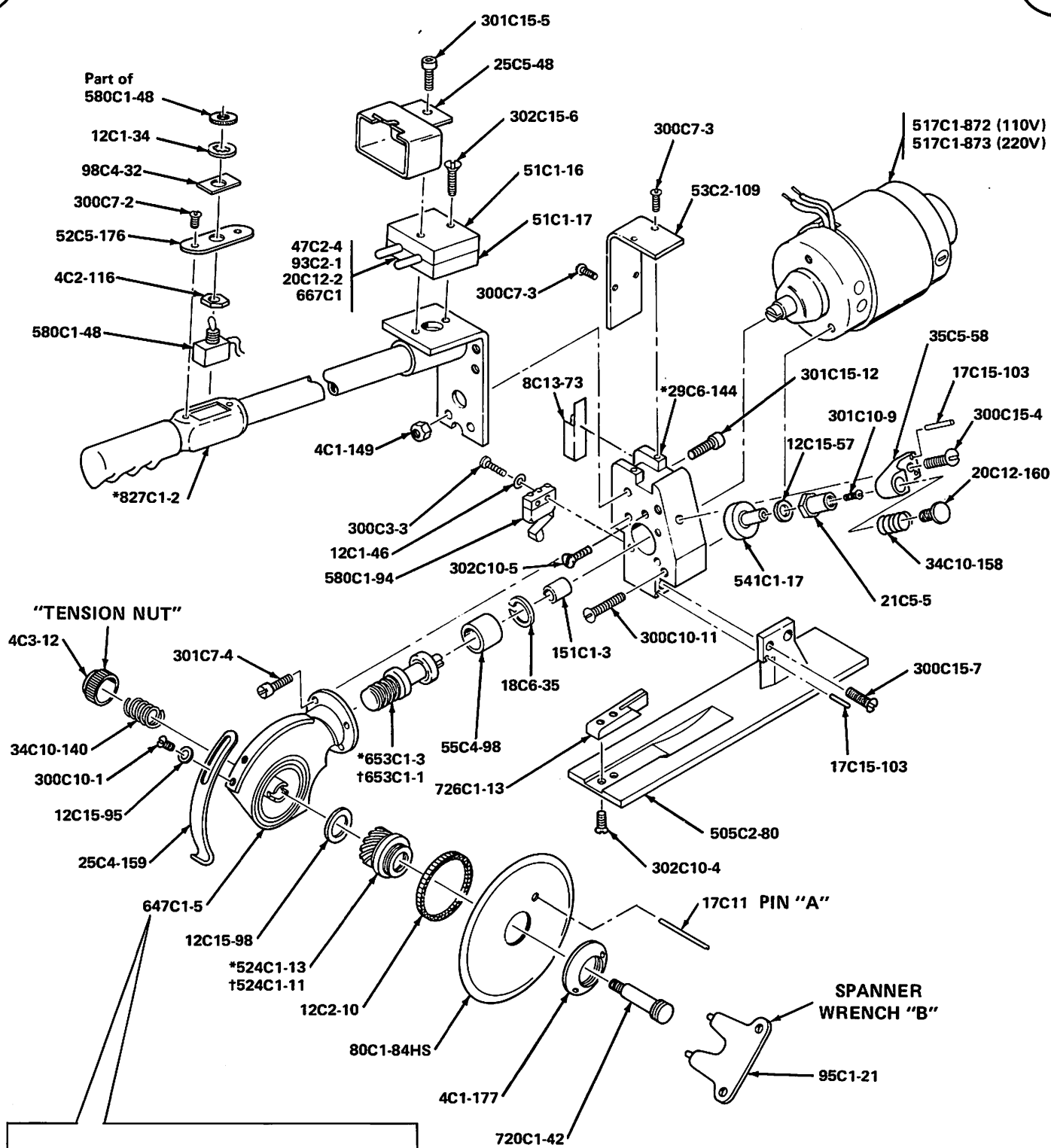
ELECTRIC MODEL



FOR PNEUMATIC MODEL – SEE PAGE 8

Part No.	Description
4C1-149	ELASTIC STOP NUT (2 Req'd.)
4C1-177	KNIFE LOCKNUT
4C2-116	NUT
4C3-12	ADJUST NUT
8C13-73	MICRO SWITCH INSULATION
12C1-34	LOCKWASHER
12C1-46	LOCKWASHER (2 Req'd.)
12C2-10	FELTWASHER
12C15-57	SPRING WASHER
12C15-95	FLAT WASHER, NO. 8 (8 Req'd.)
12C15-98	THRUST WASHER
17C11	KNIFE PIN
17C15-103	ROLL PIN (4 Req'd.)
18C6-35	SNAP RING
20C12-2	TERMINAL BLOCK SCREW (2 Req'd.)
20C12-160	SHARPENER BUTTON SCREW
21C5-5	SHARPENER BUSHING
25C4-159	KNIFE GUARD
25C5-48	TERMINAL BLOCK COVER GUARD
*29C6-144	MOTOR ADAPTOR
34C10-140	KNIFE SPRING
34C10-158	SHARPENER SPRING
35C5-58	SHARPENER ARM
47C2-4	TERMINAL PIN (2 Req'd.)
51C1-16	TOP TERMINAL BLOCK
51C1-17	BOTTOM TERMINAL BLOCK
52C5-176	SWITCH BASE
53C2-109	SWITCH COVER
55C4-98	SPACER BEARING
64C1-8	SWITCH CAM FOR TRACK
80C1-84HS	KNIFE
93C2-1	TERMINAL CONTACT (2 Req'd.)
95C1-21	WRENCH
98C4-32	ON-OFF SWITCH CLIP
151C1-3	MOTOR CHK COUPLING
300C3-3	SCREW, 2-56 x 500 ROUND HEAD (2 Req'd.)
300C7-2	SCREW, 4-36 x 187 ROUND HEAD (2 Req'd.)
300C7-3	SCREW, 4-36 x 250 ROUND HEAD (4 Req'd.)
300C10-1	SCREW, 6-32 x 187 ROUND HEAD (2 Req'd.)
300C10-11	SCREW, 6-32 x 1125 ROUND HEAD (2 Req'd.)
300C15-4	SCREW, 10-32 x 500 ROUND HEAD
300C15-7	SCREW, 10-32 x 625 ROUND HEAD (2 Req'd.)
301C7-4	SCREW, 4-36 x 312 FILLISTER HEAD (4 Req'd.)
301C10-4	SCREW, 6-32 x 500 FILLISTER HEAD (2 Req'd.)
301C10-9	SCREW, 6-32 x 187 FILLISTER HEAD
301C15-5	SCREW, 10-32 x 875 FILLISTER HEAD
301C15-12	SCREW, 10-32 x 1125 FILLISTER HEAD (2 Req'd.)
302C10-4	SCREW, 6-32 x 312 FLAT HEAD (2 Req'd.)
302C10-5	SCREW, 6-32 x 375 FLAT HEAD
302C15-6	SCREW, 10-32 x 875 FLAT HEAD
505C2-80	BASE PLATE ASSEMBLY
517C1-872	MOTOR, 110 VOLT
517C1-873	MOTOR, 220 VOLT
†524C1-11	KNIFE GEAR ASSEMBLY
*524C1-13	KNIFE GEAR ASSEMBLY
541C1-17	EMERY WHEEL ASSEMBLY
580C1-48	TOGGLE SWITCH
580C1-94	SWITCH FOR CAM
647C1-5	STANDARD WITH SHAFT
†653C1-1	WORMSHAFT
*653C1-3	WORMSHAFT
667C1	CONTACT WITH PIN (2 Req'd.)
720C1-42	KNIFE ROD & BEARING
726C1-13	SHEAR PLATE ASSEMBLY
*827C1-2	HANDLE & BRACKET COMPLETE

*FOR ELECTRIC MODEL ONLY
†FOR PNEUMATIC MODEL ONLY

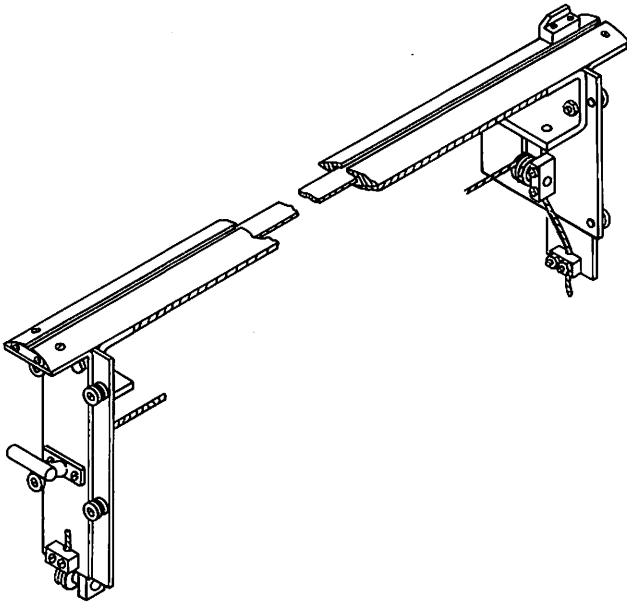


*FOR ELECTRIC MODEL ONLY
†FOR PNEUMATIC MODEL ONLY

Eastman
machine
COMPANY
779 WASHINGTON STREET
BUFFALO, NEW YORK 14203

ILLUSTRATED PARTS LIST

LIFTING MECHANISM COMPLETE



823C1-6

LIFTING MECHANISM

Part No.	Description
4C1-149	ELASTIC STOP NUT (2 Req'd.)
4C2-58	NUT (4 Req'd.)
4C2-91	NUT (4 Req'd.)
11C12-101	PULLEY SHAFT (3 Req'd.)
*12C15-95	SPACER, # 6 FLAT (6 Req'd.)
12C15-97	WASHER, 5/16 FLAT (4 Req'd.)
20C8-2	PIVOT SCREW (8 Req'd.)
20C12-156	LATCH SCREW (4 Req'd.)
20C13-6	SETSCREW (3 Req'd.)
22C3-7	LIFT HANDLE
50C11-32	TABLE CLAMP (2 Req'd.)
50C11-33	CABLE CLAMP (2 Req'd.)
62C16-229	PULLEY BRACKET (2 Req'd.)
62C16-230	PULLEY BRACKET (2 Req'd.)
62C16-231	PULLEY BRACKET (2 Req'd.)
*64C1-8	SWITCH CAM
†64C1-9	AIR VALVE CAM
70C4-39	PLATE GUIDE ROLLER (8 Req'd.)
79C12-255	TRACK PLATE (2 Req'd.)
79C12-256	PLATE SUPPORT
79C12-257	PLATE SUPPORT
97C3-38	TRACK LATCH (2 Req'd.)
*113C3-14	WEAR STRIP, 72 IN.
152C1-4	MOTOR PULLEY (2 Req'd.)
152C1-28	PULLEY
*193C1-12	TRACK, 72 IN.
*211C1	TAPE, 72 IN. TRACK (2 Req'd.)
*257C1	CABLE, 3/32 STEEL
300C15-6	SCREW, 10-32 x 3/4 ROUND HEAD (4 Req'd.)
300C15-7	SCREW, 10-32 x 5/8 ROUND HEAD (2 Req'd.)
*300C18-4	SCREW, 1/4-20 x 5/8 ROUND HEAD (4 Req'd.)
†300C18-4	SCREW, 1/4-20 x 5/8 ROUND HEAD (2 Req'd.)
*301C10-4	SCREW, 6-32 x 1/2 FILLISTER HEAD (2 Req'd.)
308C18-1	SCREW, 1/4-20 x 1" SOCKET HEAD (4 Req'd.)
308C18-3	SCREW, 1/4-20 x 3/4 SOCKET HEAD (4 Req'd.)
308C18-6	SCREW, 1/4-20 x 2-1/4 SOCKET HEAD (4 Req'd.)
†308C18-7	SCREW, 1/4-20 x 1-3/4 SOCKET HEAD (2 Req'd.)
308C18-8	SCREW, 1/4-20 x 1-1/4 SOCKET HEAD (4 Req'd.)
310C18-1	SCREW, 1/4-20 x 1/2 HEX. HEAD (8 Req'd.)

IMPORTANT

SPECIFY WIDTH OF TABLE WHEN ORDERING
TRACK OR COMPONENT PARTS

*FOR ELECTRIC MODEL ONLY
†FOR PNEUMATIC MODEL ONLY

823C1-7 TRACK ASS'Y WITH
CABLE FOR 72"
TABLE COMPLETE

113C3-14 WEAR STRIP

193C1-12 TRACK

211C1 TAPE

257C1 CABLE

823C1-6 LIFTING MECHANISM

823C1-8 TRACK ASS'Y WITH
CABLE FOR 60"
TABLE COMPLETE

113C3-15 WEAR STRIP

193C1-13 TRACK

211C1-1 TAPE

257C1-3 CABLE

823C1-6 LIFTING MECHANISM

*823C1-9 TRACK ASS'Y WITH
CABLE FOR
VARIABLE WIDTH
TABLE COMPLETE

*113C3-16 WEAR STRIP

*193C1-14 TRACK

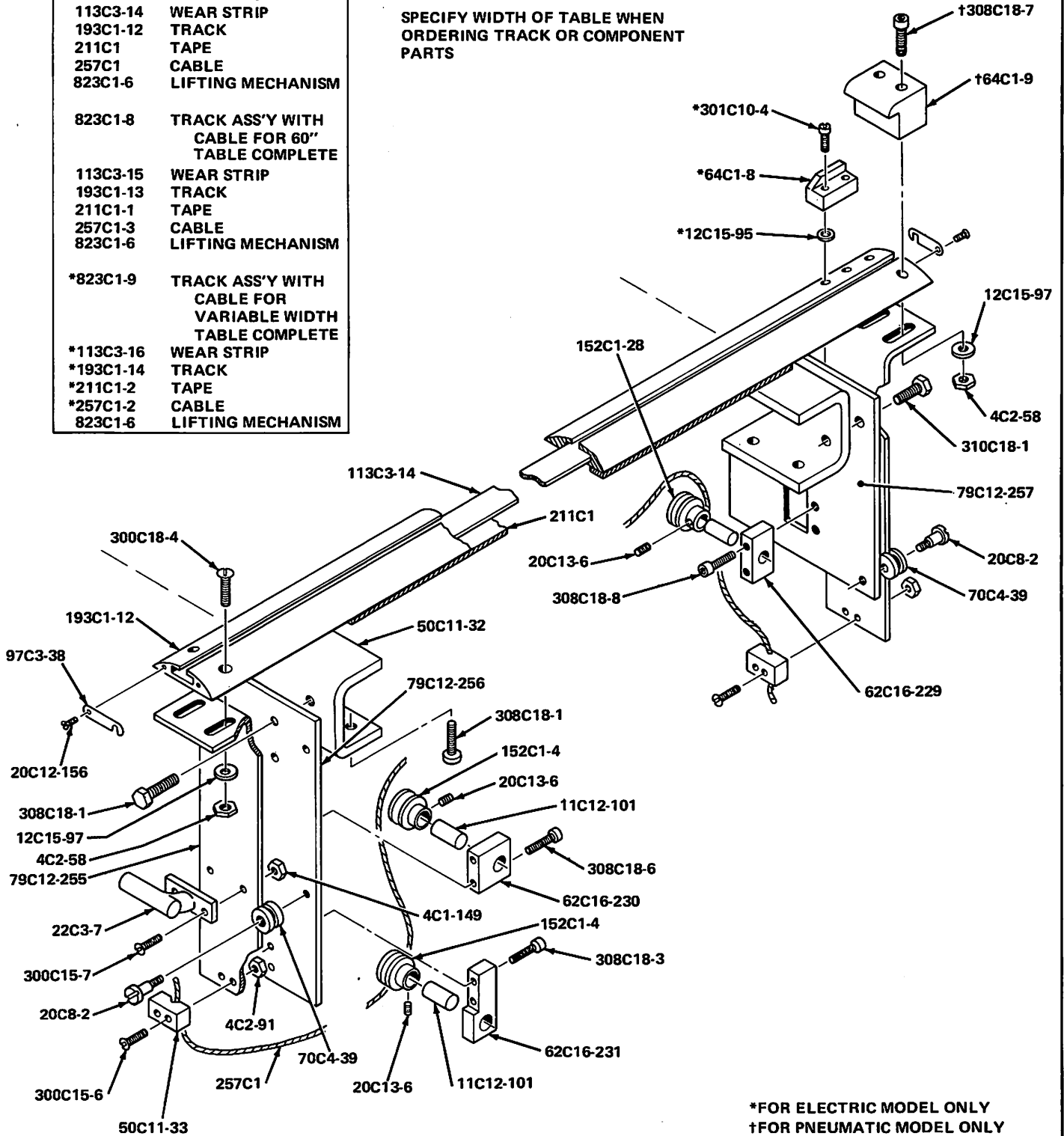
*211C1-2 TAPE

*257C1-2 CABLE

823C1-6 LIFTING MECHANISM

IMPORTANT

SPECIFY WIDTH OF TABLE WHEN
ORDERING TRACK OR COMPONENT
PARTS

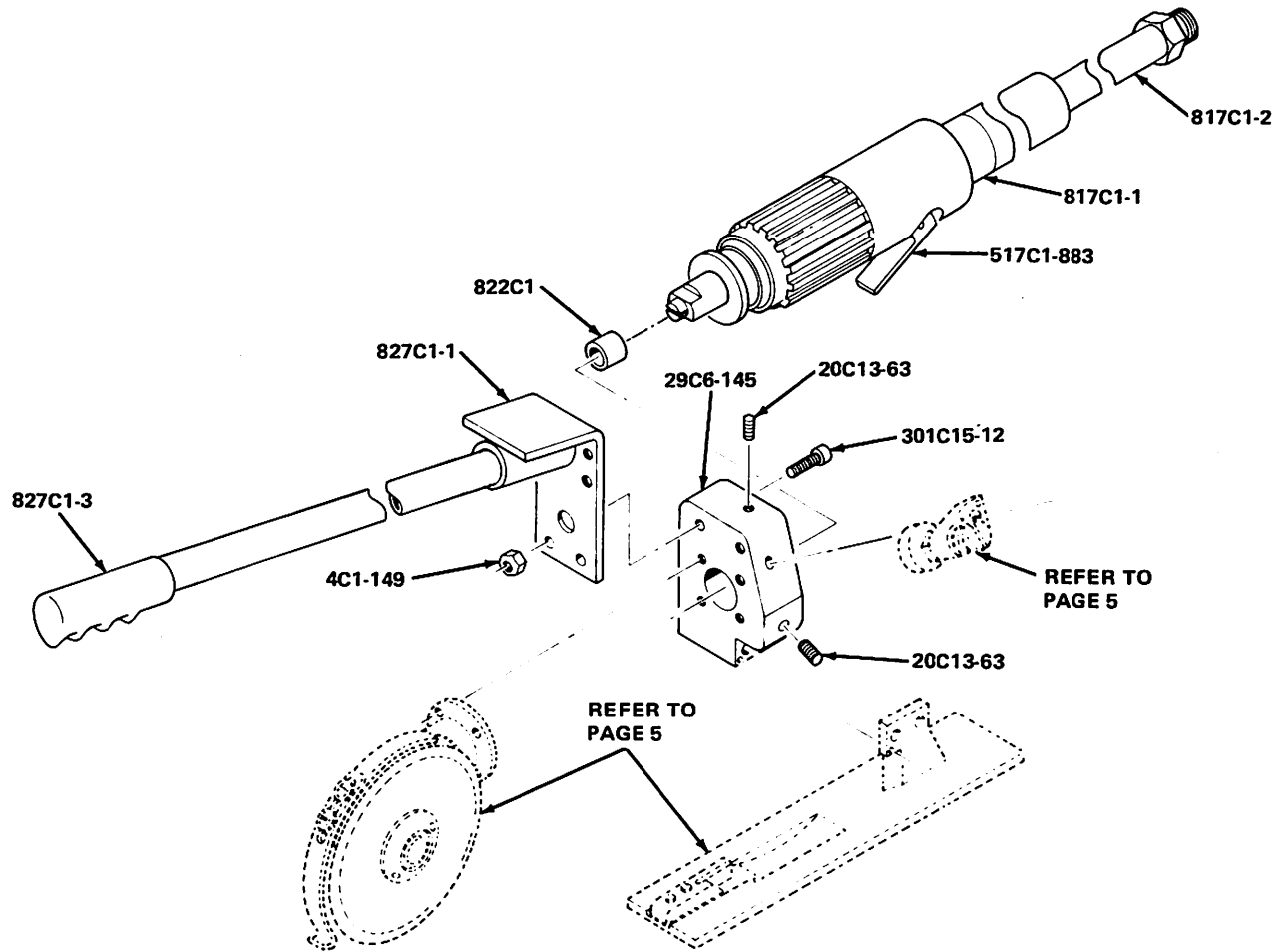


*FOR ELECTRIC MODEL ONLY
†FOR PNEUMATIC MODEL ONLY

Eastmanmachine
COMPANY
778 WASHINGTON STREET
BUFFALO, NEW YORK 14203

PNEUMATICALLY POWERED

Part No.	Description
4C1-149	ELASTIC STOP NUT (2 Req'd.)
20C13-63	SET SCREW (3 Req'd.)
29C6-145	AIR ADAPTOR
301C15-12	SCREW, 10-32 x 1125 FILLISTER HEAD (2 Req'd.)
517C1-883	MOTOR ASSEMBLY
817C1-1	EXHAUST OVER HOSE
817C1-2	AIR INTAKE HOSE
822C1	MOTOR COUPLING
827C1-3	HANDLE-BRACKET COMPLETE



GUARANTEE

We guarantee our machines for six months from date of invoice against defective parts and workmanship and will repair or replace any machine going wrong from these causes when returned to us carrying charges prepaid.

This guarantee does not contemplate making good damage caused by misuse or neglect; and is void if other than genuine Eastman knives, emery wheels and parts are used in the machine.

Eastman
COMPANY

779 WASHINGTON STREET
BUFFALO, NEW YORK 14203
AREA CODE (716) 856-2200